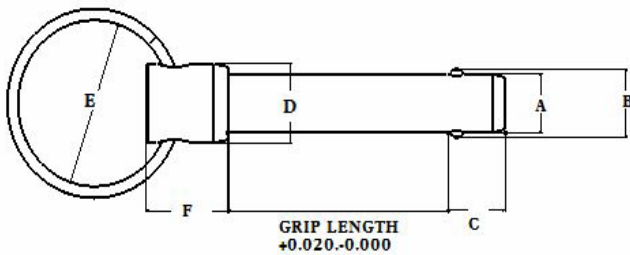


Material: SS304
材质：304 不锈钢

BASIC PART NO.*	A DIA		GRIP B	E +0.010 /-0.000	C	D	R DIA
	NOMINAL	ACTUAL					
18SDS	3/16 (#10)	.1880		.204	.200	0.187	1.00
25SDS	1/4	.2480		.286	.312	0.220	
31SDS	5/16	.3105		.358	.375	0.250	
37SDS	3/8	.3730		.426	.375	0.250	
43SDS	7/16	.4355		.489	.500	0.250	1.38
50SDS	1/2	.4980		.570	.625	0.312	
56SDS	9/16	.5605		.642	.687	0.312	1.50
62SDS	5/8	.6230		.856	.750	0.375	
75SDS	3/4	.7480		.856	.937	0.375	
87SDS	7/8	.8730		0.998	1.000	0.500	2.00
100SDS	1	.9980		1.140	1.250	0.500	



Material: Carbon Steel or Stainless Steel

材质：碳钢 或 不锈钢

Note: 3/16-dia pins have one locking ball instead of two, due to their small size.

注：3/16" 的销子由于直径太小只能装配一个钢珠。

BASIC PART NO.*	A DIA +0.000/-0.003		B MIN	C MAX	D +0.15/-0.15 DIA	E DIA	F MAX
	NOMINAL	ACTUAL					
18SD	3/16 (#10)	.1880	.217	.250	.375	1.00	.562
25SD	1/4	.2480	.280	.344			
31SD	5/16	.3105	.360	.359			
37SD	3/8	.3730	.430	.390			
43SD	7/16	.4355	.495	.469			
50SD	1/2	.4980	.570	.516	.625	1.50	
56SD	9/16	.5605	.645	.593	.688		
62SD	5/8	.6230	.720	.672	.750		
75SD	3/4	.7480	.860	.750	.875	2.00	
87SD	7/8	.8730	1.03	.859	1.000		
100SD	1	.9980	1.16	.984	1.125		